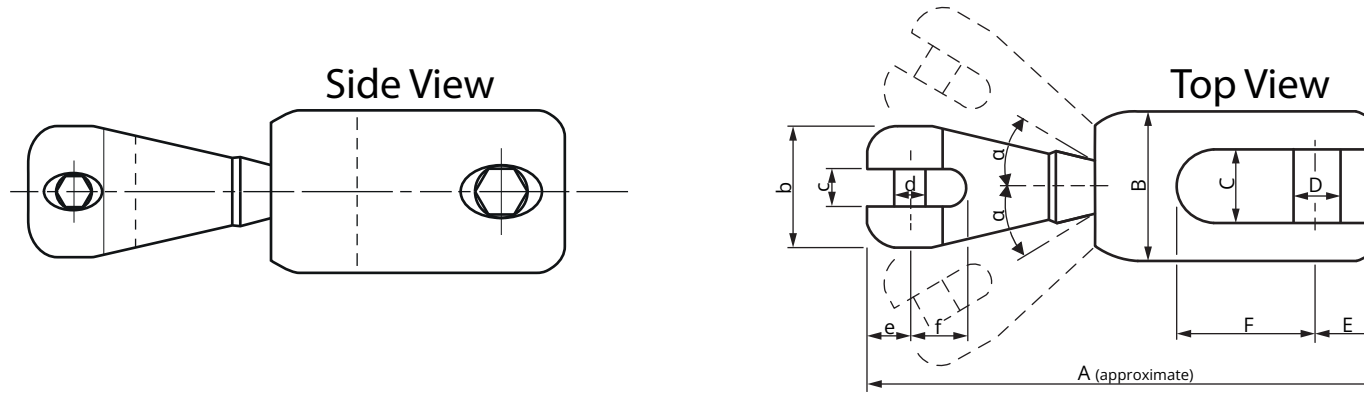


ULTRA Classic Swivel Selection Table

The ULTRA Classic Swivel has been designed to connect the chain to symmetric anchors such as the ULTRA Stockless Anchor. If you are looking to connect an asymmetric anchor (ULTRA Anchor), please check ULTRA Flip Swivel (UFS).



- UCS selection should be based on the "Max. Anchor Weight". If it's not enough, a bigger UCS must be selected.

- One size bigger UCS can also be used with the same chain. Therefore one size bigger swivel should be selected for chains such as Grade 70 (G7).

- Since the swivel is a component that will wear out, the warranty period is limited to 5 years. However, perform visual wear checks at least once a year, and if there is no severe deformation, corrosion, or loosening, you can continue to use it safely even after the warranty period.

- Tested by Rina (except UCS 32 – 1000).
Safe Working Load = 0,5 x Breaking Load

TYPE	Chain Diameter (*)		Whole Length Approx. A	Chain Side Dimensions b-c-d-e-f	Anchor Side Dimensions B-C-D-E-F	Breaking Load	Maximum Anchor Weight
(kg) - (lbs)	(mm)	(inch)	(mm)	(mm)	(mm)	(kN) (lbf)	(kg) (lbs)
UCS 6-14	6	1/4"	107	25x7,6x7x9x11	35x16x11x13x31	38,4 8640	14 31
UCS 8-24	6-8	1/4"-5/16"	129	30x9,4x9x11x14,5	40x19x13x16x36,5	56,7 12740	24 53
UCS 10-40	8-10	5/16"-3/8"	147	35x11,6x11x13x17	45x21x14,5x18x40	90,7 20400	40 88
UCS 13-85	10-12-13	3/8"-1/2"	185	45x15,2x14,5x16,5x23	55x26x18x23x51,5	160,9 36200	85 187
UCS 16-160	12-13-14-16	1/2"-5/8"	217	53x18,2x18x20x27	65x31x22x27x59	236,5 53200	160 352
UCS 20-300	16-18-20	5/8"-3/4"	269	65x23x22x26x34	85x40x26x32x72	321,5 72300	300 660
UCS 26-570	20-23-26	3/4"-1"	316	85x30x26x33x43	110x52x32x40x77	474,8 106700	570 1256
UCS 32-1000	26-30-32	1"-1 1/4"	407	110x38x32x43x55	140x66x40x52x99	~726 ~163047	1000 2200

(*): The diameters provided here are for the standard and one size smaller chains that can normally be connected to the standard Classic Swivel.

If you would like to connect to even smaller chains, there are two options:

1- You can attach a larger link suitable for the standard swivel to the end of your small-sized chain and then make the swivel connection through it

2- You can order a modified swivel. With custom manufacturing, a modified swivel can be made that can directly connect to the desired chain.

Example: the UCS20-300 needs to be connected to a chain of at least Ø16. If you want to connect directly to a Ø12 chain, you can order the modified swivel coded as UCS 20/12-300.

UltraProducts
West

We reserve the right to make changes to dimensions and conditions.

This document was updated on the 08.11.2024

For the latest version, please visit www.ultraproductswest.com